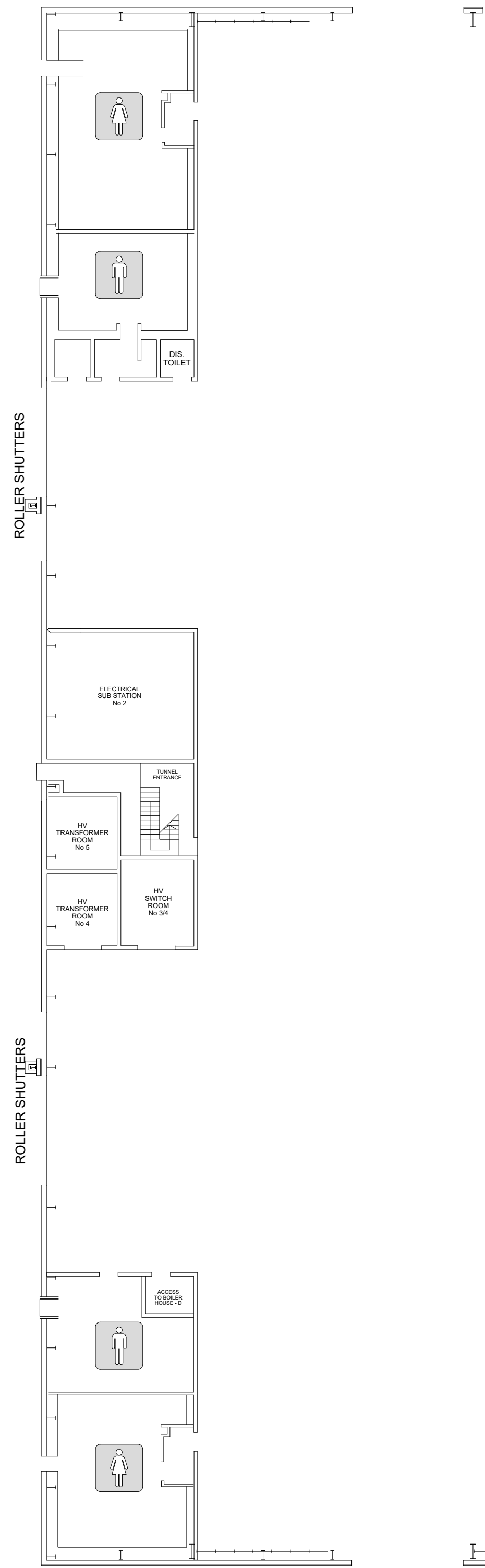
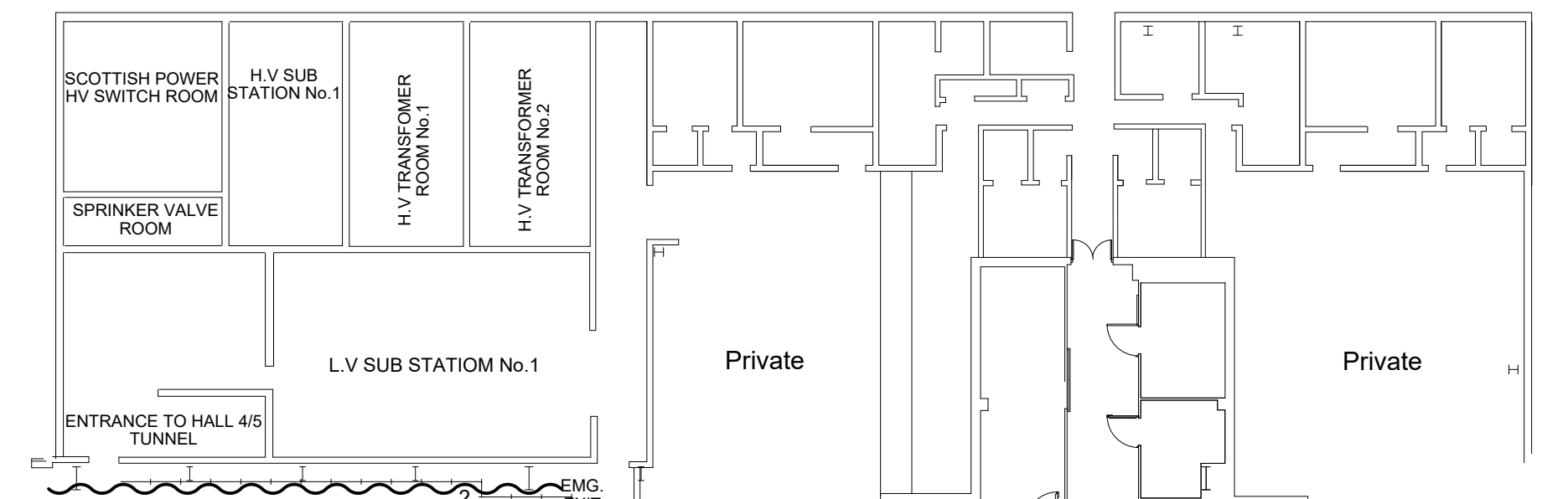
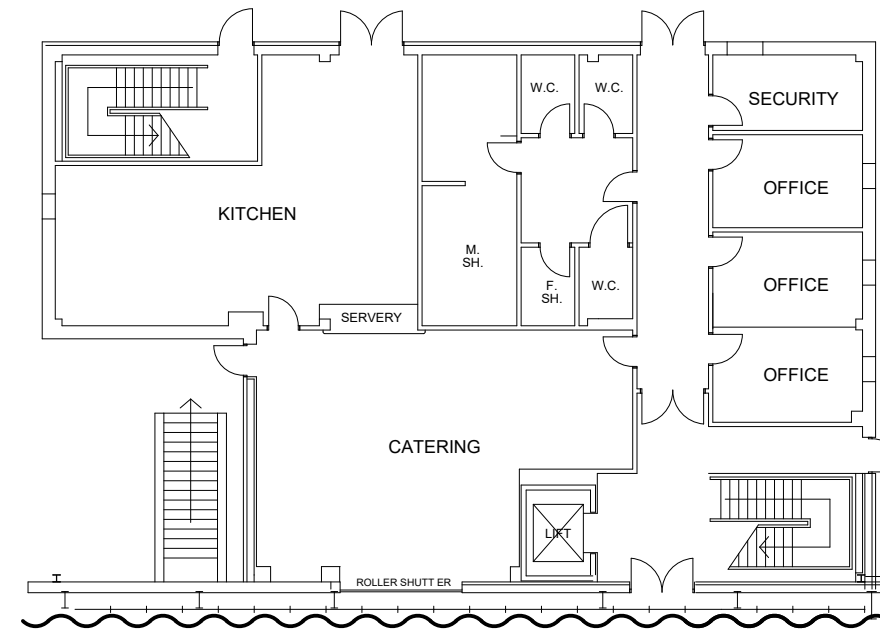
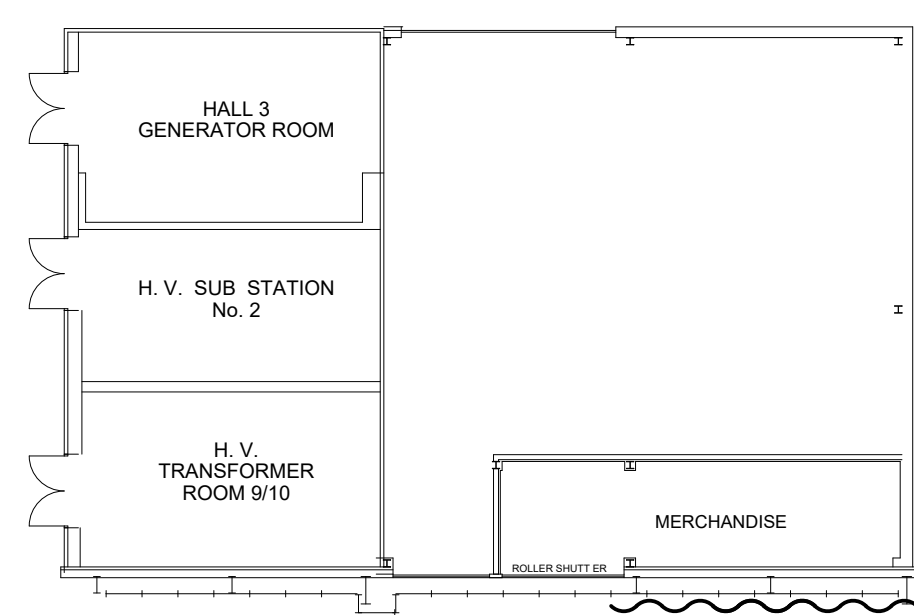
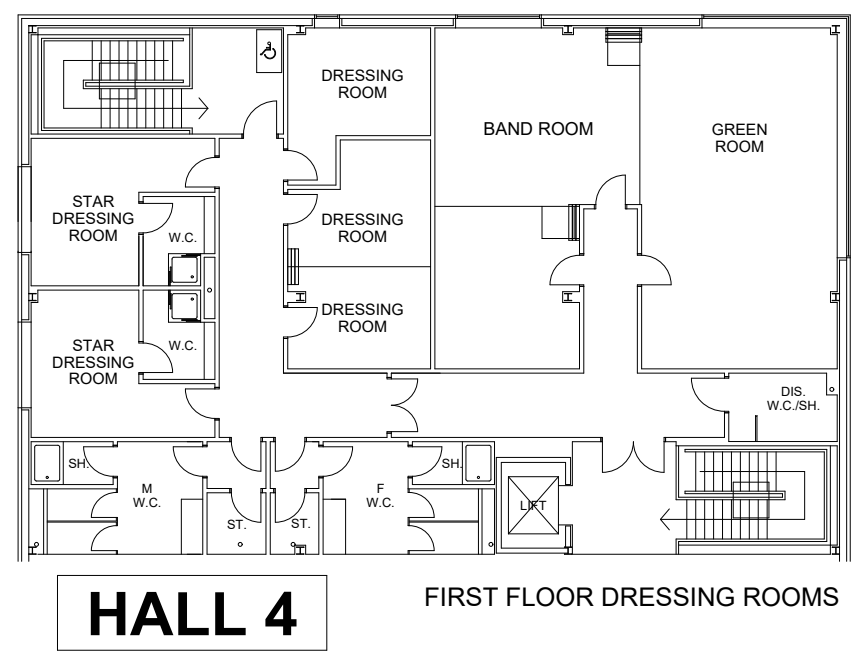


# VisitScotland Expo 2019



- Available - 123.54m<sup>2</sup>
- Shell - 1508m<sup>2</sup>
- Seating - 943m<sup>2</sup>
- Feature - 309m<sup>2</sup>
- Space - 261m<sup>2</sup>
- Catering - 0m<sup>2</sup>



© Global Experience Specialists (GES)  
Floorplan subject to change

Issue Number: 12  
Issue Date: 15 Jan 2019  
Updated by: Paul R  
Scale: N.T.S.

Hours allowance: 15  
Hours used: 4 hrs 48 mins  
Hours remaining: 10 hrs 12 mins